

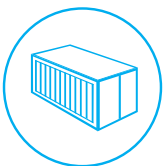
MiFleet

Trailer Tracker

ATrack AS11



Use Cases:



Portable



Construction



Trailer

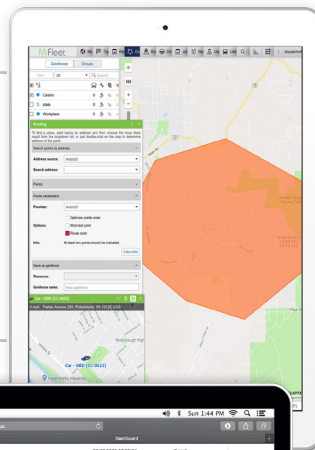
LTE FDD Cat 1
B2/B4/B5/B12/B25/B26

Trailer Tracker

AS11 is equipped with rechargeable battery making it an ideal solution for asset management. With IP68 rated casing, AS11 is designed to operate under extreme environments against water and dust.

Features:

- iOS/Android Fleet Management
- Device Removal Alerts
- Store n' Forward
- Towing Alerts
- After Hours Alerts



Benefits:

- Starter Interrupt via Text
- Universal Install
- Temperature Sensor
- Driver Behavior & ID
- Vehicle Maintenance Reporting
- Real-time Monitoring
- Power Take Off (PTO)
- Ignition On/Off Notifications
- Idle Reports
- Historical Geofencing
- Universal Install
- Internal Backup Battery
- 3-Wire (Power, Ground, & Ignition)
- Engine Operating Hours
- Seasonal Equipment
- Location Sharing
- IP68 Water Proof



This solution has the possibility to lower your insurance rates: **CALL NOW!**
www.mifleet.us | 1.866.MiFleet | sales@mifleet.us