

# MiFleet

Hardware Catalog

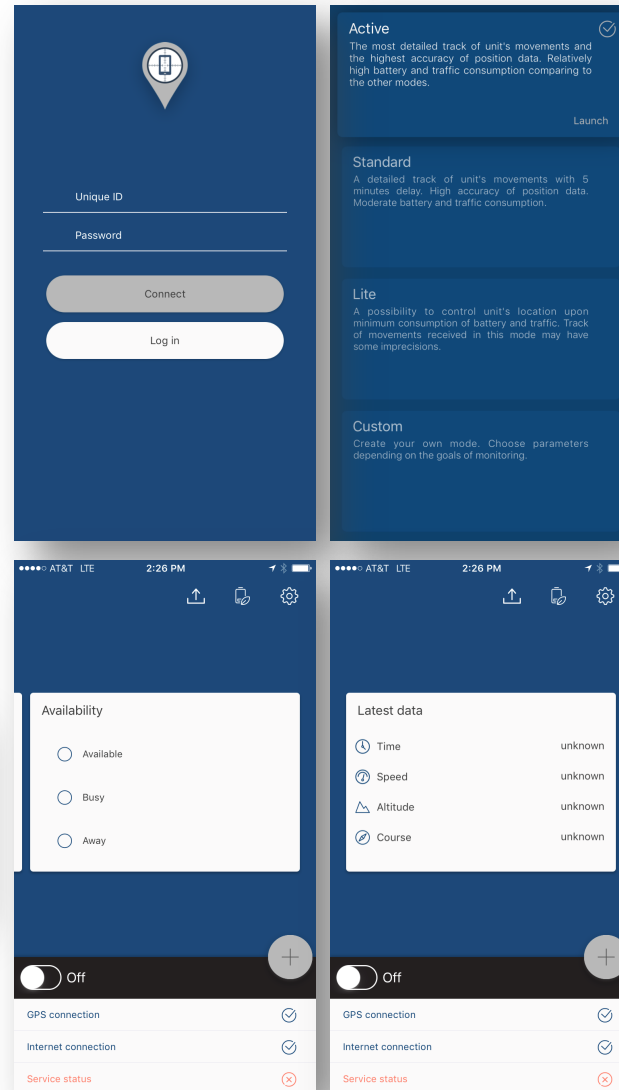


The MiTag mobile application turns your iOS and Android smartphone or tablet into a GPS Tracking device updating the MiFleet server's with positioning of your device and mobile workforce. MiTag is an efficient tracking tool for any mobile workforce. Once downloaded onto your mobile device, the device needs to be paired with the MiFleet Web Application to begin transmitting location information to the MiFleet monitoring software platform.

MiTag is FREE to download, but does require a PAID monthly subscription to view its location information in MiFleet.

Lawless MiTag					
20 days 16 h ago (03-23-2017 08:35 pm)					
23504 Calistoga Pl, Ramona, CA 92065					
New geofence - big... Big CA Geofence, California					
2 mph	1659 ft	12528 mi	8	32.9986797273	-116.819728715
Vehicle Speed (GPS): 1.88 mph					

Available data as displayed in the MiFleet Software Application



- Mobile device transforms into a GPS Tracking Device for any mobile workforce.
- iOS and Android versions available
- 4 unique battery saving modes:
  - Active
  - Standard
  - Lite
  - Custom
- Ability to send SOS messages and photos from your mobile device to the MiFleet platform





The LMU-3030 series features a compact form factor, superior GPS performance, OBD-II interface, backup battery, and a 3-axis accelerometer. These features enable the LMU-3030 to access vehicle diagnostic interface data, track vehicle speed and location, plus detect hard braking, cornering, acceleration and capture pre and post-impact data. Superior internal antennas for both cellular and GPS eliminate the need for professional installation and make the LMU-3030 install quick, easy and inexpensive.

The LMU-3030 is designed to dramatically reduce cost, power and size while significantly improving field reliability in 12 volt passenger or light-duty vehicles.

The MiFleet software is optimized to accept the full range of the LMU-3030 OBD-II interfaces including - J1850 PWM, J1850 VPW, ISO-9141-2, ISO-14230, KWP 2000, ISO-15765 CAN Vehicle interfaces which are multiplexed to allow full connectivity to retrieve all supported codes made available by the auto manufacturer. In other words, if your vehicle supports the data elements the device will broadcast it to the MiFleet platform.

LMU-3030 TEST	
10 days 6 h ago (08-19-2016 01:37 pm) 10675 Trenea St, San Diego, CA 92131 Qwork1, New geofence, California	
0 mph	454 ft
14645 mi	413 h
8	
Ignition: Off	VIN: WP0ZZZ99ZTS392124
Motion (Accelerometer): No Motion	Power State (OBD): Disconnected
Device Battery Status: Charged	Vehicle Speed (GPS): 0.00 mph
Vehicle Voltage: 0.00 V (10 days 7 h ago)	Device Back Up Battery: 3.75 V (10 days 6 h ago)
Trip Odometer (GPS): 0.00 mi (11 days 7 h ago)	Idle Time (In Current Trip): Unknown
Max Speed (Trip): 2.28 mph (10 days 8 h ago)	Vehicle Speed (OBD): 0.00 mph (11 days 5 h ago)
Engine Speed (OBD): 0.00 rpm (11 days 5 h ago)	Engine Coolant Temp (OBD): 0.00 °C
Odometer (OBD): 0.00 mi (18 days 12 h ago)	Trip Odometer (OBD): 0.00 mi (11 days 5 h ago)
Fuel Level Percentage (OBD): 0.00 % (11 days 5 h ago)	Fuel Economy (OBD): 0.00 mpg
Fuel Level Remaining (OBD): 0.00 gal (18 days 12 h ago)	Fuel Rate (OBD): 0.00 gal/hour (11 days 5 h ago)
Trip Fuel Consumed (OBD): 0.00 gal (18 days 12 h ago)	Calculated Trip Fuel Usage (OBD): 0.00 gal (11 days 5 h ago)
Average Fuel Economy (OBD): 0.00 mpg	Vehicle Fuel Type (OBD): Not Available (0.00 )
DTC Count: 0.00 (11 days 5 h ago)	DTC Code 1: Intake Air Temperature Circuit High Input (P0113)
DTC Code 2: Unknown	DTC Code 3: Unknown
DTC Code 4: Unknown	DTC Code 5: Unknown

Available data as displayed in the MiFleet Software Application



Quick Install

Vehicle Type: Passenger/Light Duty with J1962 OBD compliant connector

Device Reporting Frequency: 30 Seconds

Install Time : < 2 minutes

Accessories: Optional Extension Cable

Supports...

- OBD Diagnostics Data
- DTC Vehicle Trouble Codes
- Harsh Acceleration & Braking
- Harsh Turning
- Impact Detection
- GPS Location
- Speed
- Battery Voltage
- Vehicle Idle Time
- Fuel Economy/Rate/Usage
- Device Removal Notice
- Remote Device Management
- Over the Air Updates & Troubleshooting

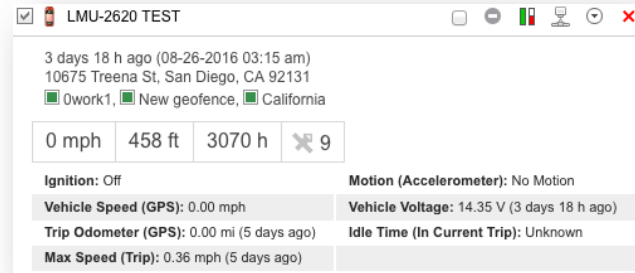


The LMU-2600 is a robust, affordable device you can count on for any vehicle in your fleet. The LMU-2600 incorporates wireless communications along with extra-sensitive GPS, a powerful processing engine, and a 3-axis accelerometer that detects and acts on hard braking, aggressive acceleration, or vehicle impacts. Internal or external antenna options enables the device to be mounted virtually anywhere for easy, inexpensive installations.

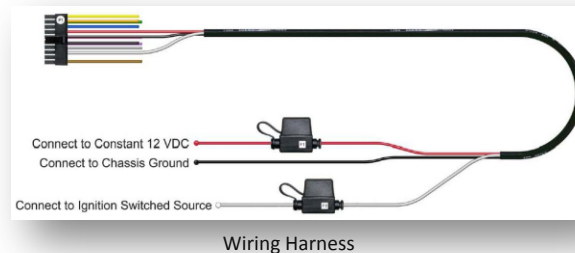
The LMU-2600 is designed to offer your fleet the flexibility needed to support the numerous installation environments. MiFleet offers 3 installation packages including:

- 1.) Internal Antenna
- 2.) External Window Mount Antenna
- 3.) External Roof Mount Antenna

The 2600 Series includes an internal battery for last gasp location information and device removal notifications.



Available data as displayed in the MiFleet Software Application



Roof Antenna



Window Antenna

Vehicle Type: Any Vehicle

Device Reporting Frequency: 30 Seconds

Install Time : < 20 minutes

Accessories: Wiring Harness

Supports...

- Harsh Acceleration & Braking
- Harsh Turning
- Impact Detection
- GPS Location
- Speed
- Battery Voltage
- Vehicle Idle Time
- Remote Device Management
- Over the Air Updates & Troubleshooting

Installation Options

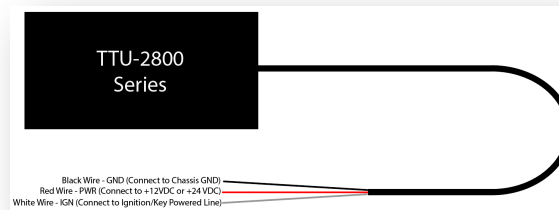
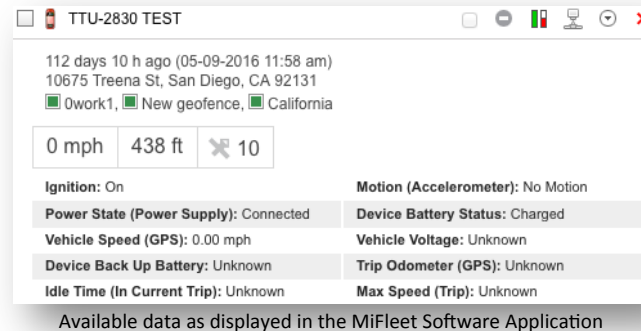
- Internal Antenna
- External Window Mount Antenna
- External Roof Mount Antenna



The TTU-2830 high value tracking unit features a small size, superior GPS performance, an internal 5.2 Ah battery and three Inputs/ three Outputs (I/O). The TTU-2830 is a complete vehicle tracking and communications device incorporating next-generation, super-sensitive GPS technology on cellular networks for installation in or on any 12 or 24 volt mobile vehicle. Superior internal antennas for both cellular and GPS eliminate the need for wired antennas and make the TTU-2830 mountable virtually anywhere on the vehicle for easy, inexpensive installations.

The TTU-2830 is designed for optimal size and power consumption coupled with superior performance and reliability resulting in dramatically reduced cost of ownership.

Battery life expectancy is 6 months. Device is waterproof. Perfect for deployment that sit for long-periods of time.



Wiring Diagram

OPTIONAL:  
Temperature Monitoring Available  
(Temperature Probe Required)



Vehicle Type: Any Vehicle

Device Reporting Frequency: 30 Seconds

Install Time : < 20 minutes

Accessories: None incudes built-in Wiring Harness

Supports...

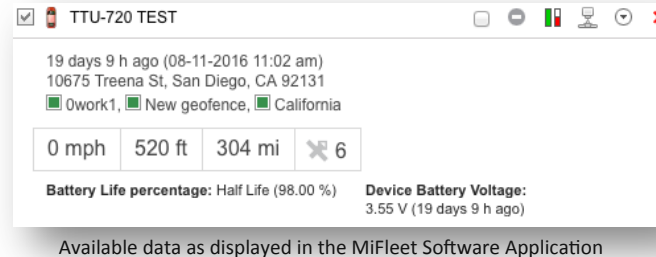
- Ignition Status
- Motion Detection
- Power Status
- Device Battery Status
- Vehicle Speed
- Vehicle Device Voltage
- Backup Battery Status
- GPS Trip Odometer
- Idle Time
- Max Speed per Trip
- Remote Device Management
- Over the Air Updates & Troubleshooting



The TTU-700 is a battery operated non-rechargeable trailer tracking product designed for reliable, multi-year deployments. The TTU-700 is an ideal solution for managing assets that will be deployed for long periods without maintenance needs.

The TTU-700 high-value tracking unit features a small size, superior GPS performance, and an internal 57 Ah battery. The TTU-700 is a complete trailer and asset tracking and communications device incorporating next-generation, super-sensitive GPS technology on cellular networks for installation on the exterior of any mobile asset. Superior internal antennas for both cellular and GPS eliminate the need for wired antennas and make the TTU-700 mountable virtually anywhere on the trailer for easy, inexpensive installations.

**Battery Life:** Up to 7 Years based on reporting frequency.



Optional Mounting Kit & Lanyard

**Asset Type:** Any Asset

**Device Reporting Frequency:** 24 Hours,

**Install Time :** < 30 minutes

**Accessories:** None Included.

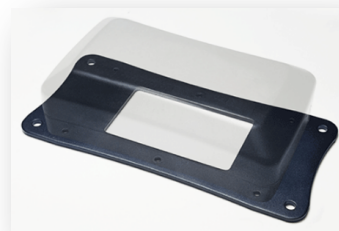
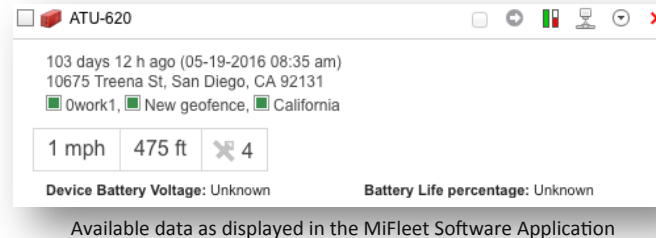
**Recommended:** Mounting Bracket & Lanyard

**Supports...**

- Location
- GPS Speed
- Device Battery Life



The ATU 620 is a battery-operated asset tracking product designed for reliable, multi-year deployments. The ATU-620 is an ideal solution for managing assets that will be deployed for long periods without maintenance needs.



Optional Mounting Plate

The sealed ATU-620 high-value tracking unit features a small size, superior GPS performance and replaceable AA Alkaline batteries. The ATU-620 is a complete asset tracking and communications device incorporating next-generation, super-sensitive GPS technology on cellular networks for installation inside any mobile asset. Superior internal antennas for both cellular and GPS eliminate the need for wired antennas and make the ATU 620 mountable virtually anywhere for easy, inexpensive installations.

Replaceable AA Batteries (not included).

Asset Type: Any Asset

Device Reporting Frequency: 24 Hours,

Install Time : < 30 minutes

Battery: Not Included

Accessories: None Included.

Recommended: Mounting Bracket

Supports...

- Location
- GPS Speed
- Device Battery Voltage
- Battery Life Percentage